

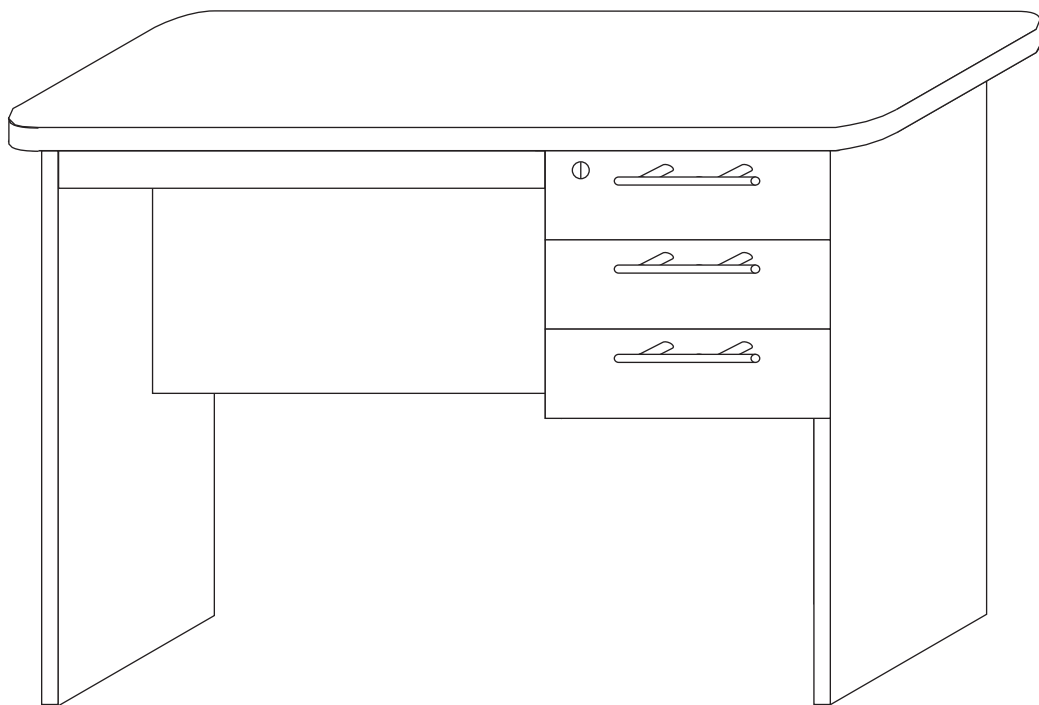
J.BURROWS

.....

ASSEMBLY INSTRUCTION

Watson Desk

JBWATSONDK / JBWATDKWE



Important
Estimated Assemble Time: 50min



MORE THAN 1 PERSON
IS REQUIRED TO SAFELY
ASSEMBLE THE ITEM

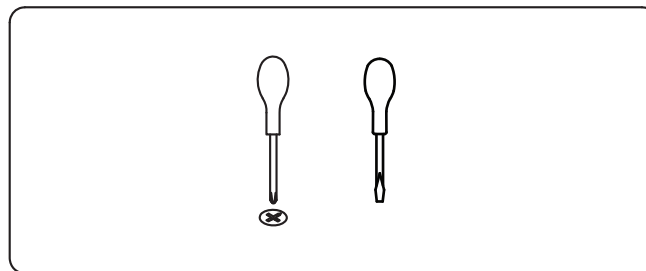


HOTLINE



ASSEMBLE ON A CLEAN,
FLAT SURFACE

Tools Required For Assembly



Please check you have all hardware components before assembling.

If you are missing any hardware components from the Hardware List please contact My Zone on

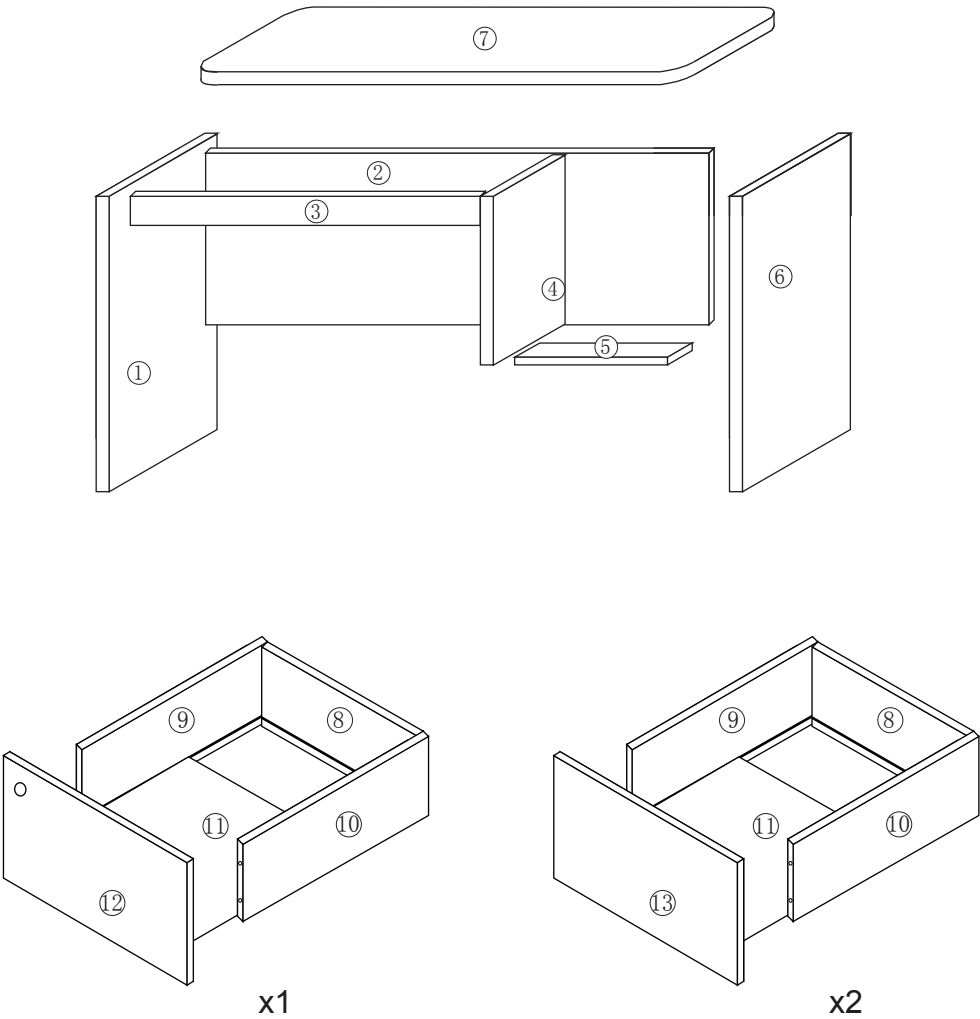
Tel: (03) 9310 3011 or Email: hardware@myzone.net.au

Please ensure you have the name of the item, store purchased from, hardware part required and quantity.

If you are missing any panels from the Panel List please contact your store of purchase.

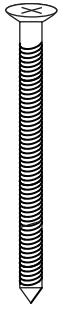
Please retain your receipt to validate warranty. Enjoy your new purchase!

PANEL LISTING



HARDWARE LISTING

A



5 X 40MM
X 16pcs

B



8 X 30MM
X 12pcs

C

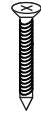


14 X 12MM



7 X 38MM
X 6pcs

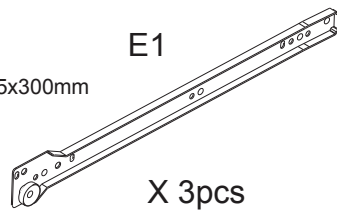
D



3.5 X 14MM
X 42pcs

E1

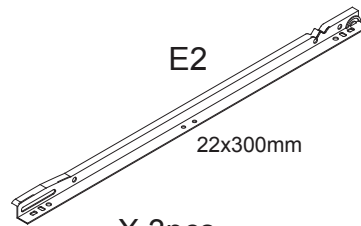
35x300mm



X 3pcs

E2

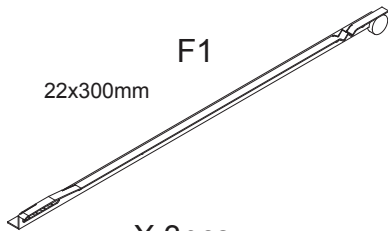
22x300mm



X 3pcs

F1

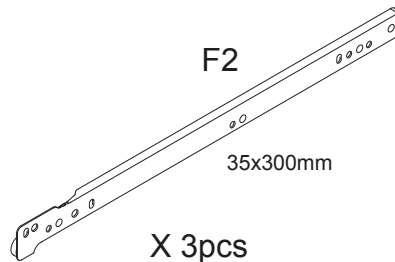
22x300mm



X 3pcs

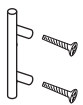
F2

35x300mm



X 3pcs

G



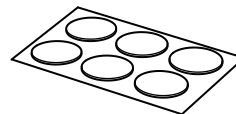
X 3pcs

H



6 X 30MM
X 6pcs

I



1 set=6pcs

J



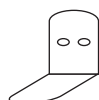
X 1pc

K



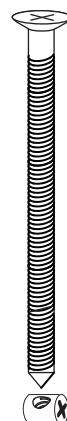
11 X 9MM

L



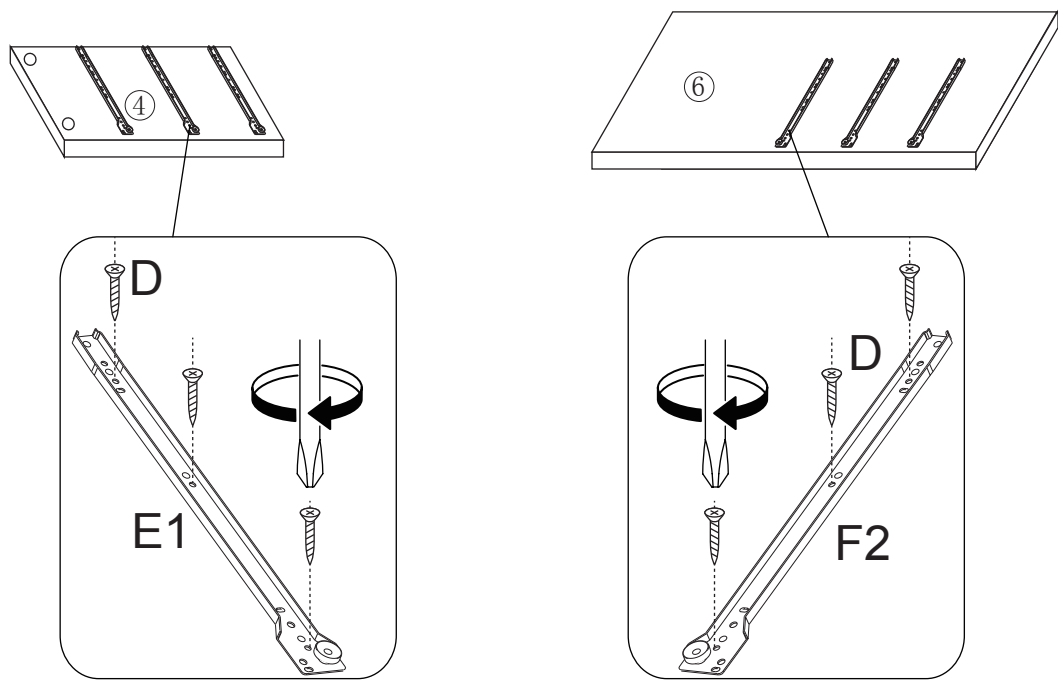
X 1pc

M

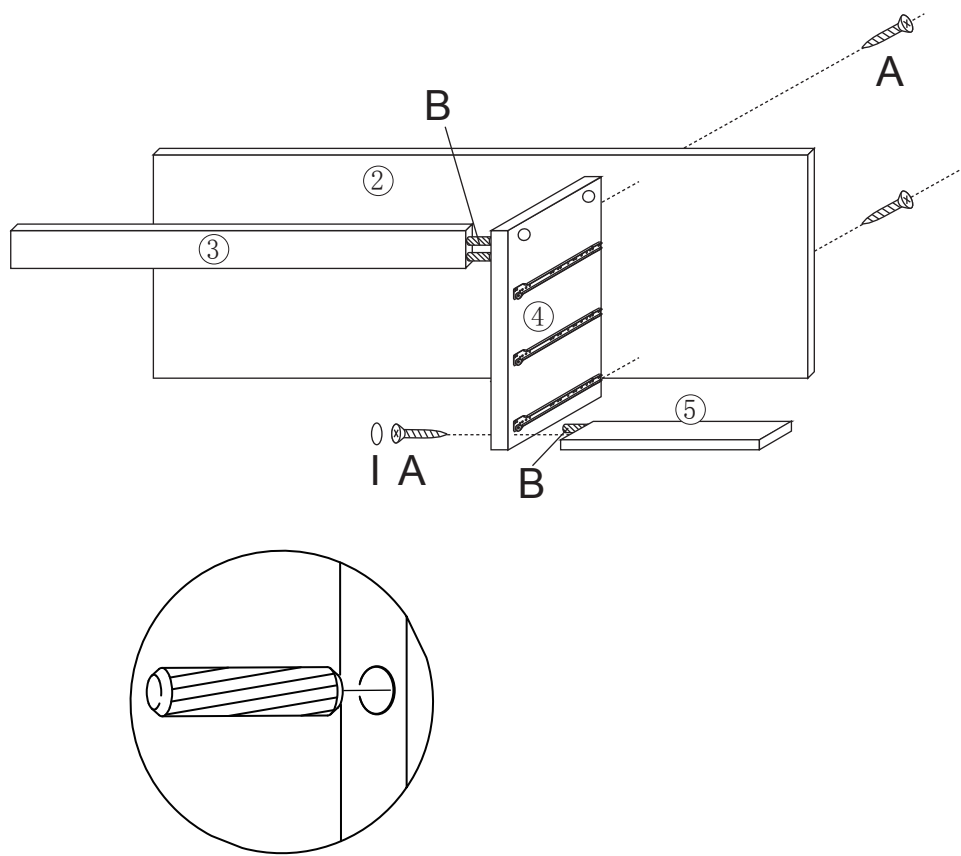


5 X 50MM
X 4pcs

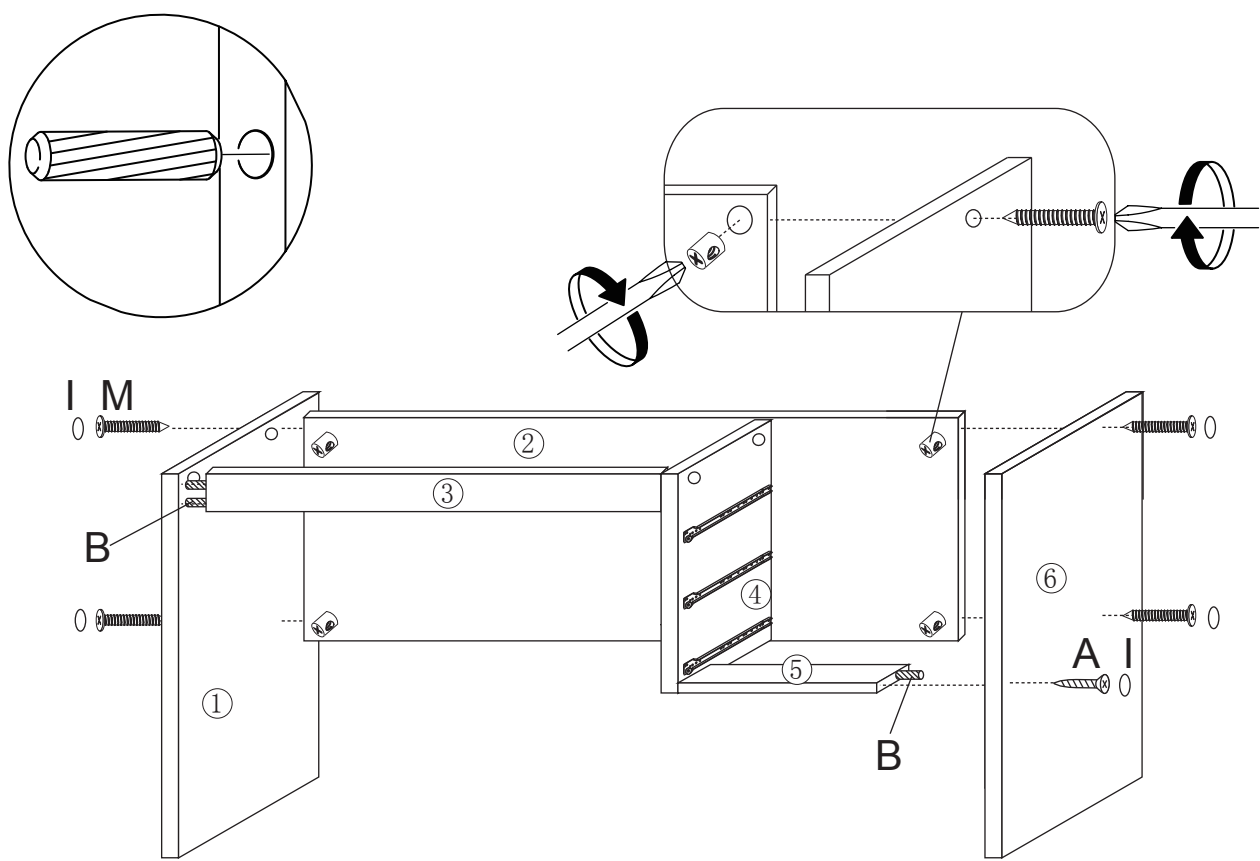
STEP 1



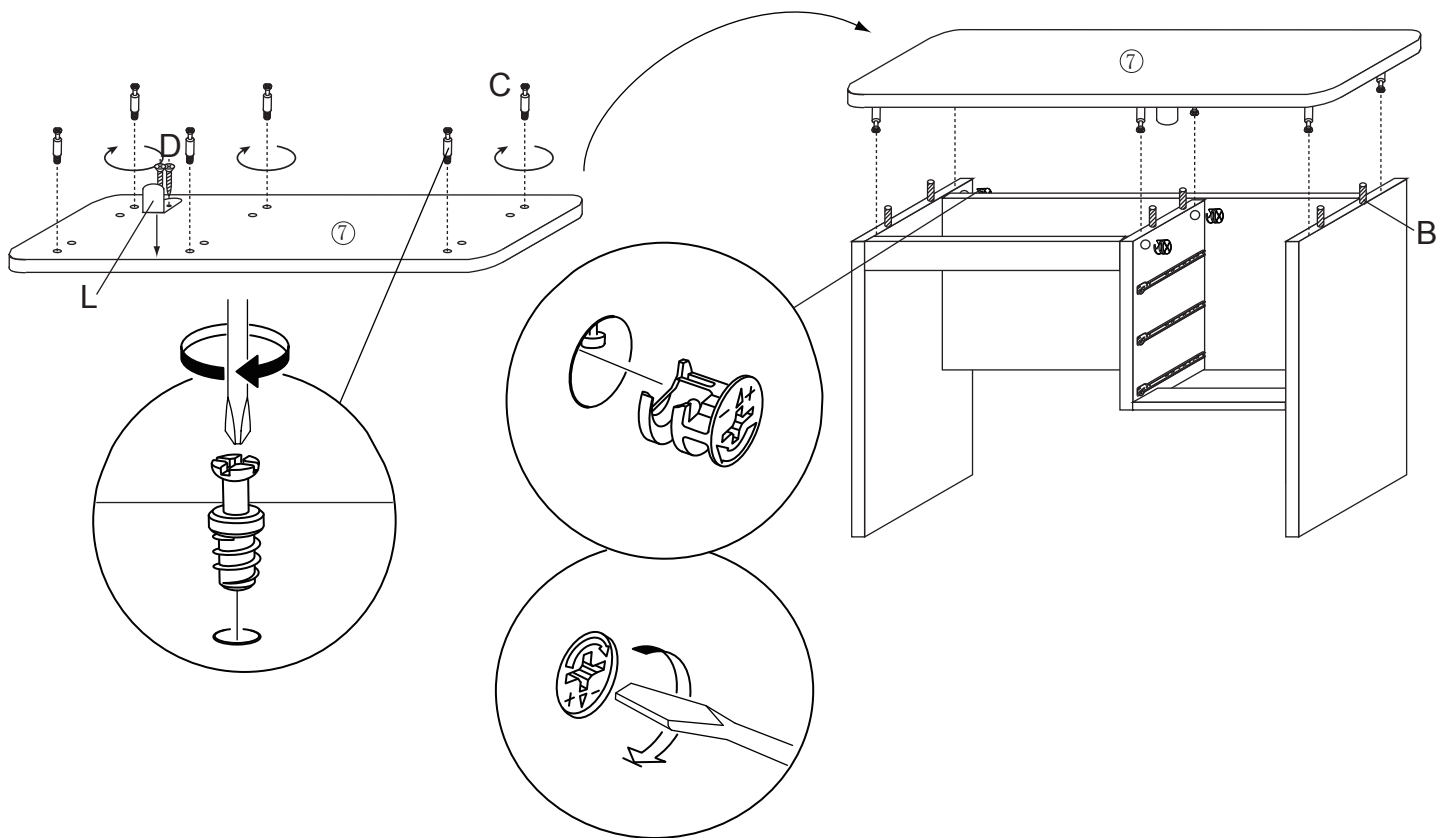
STEP 2



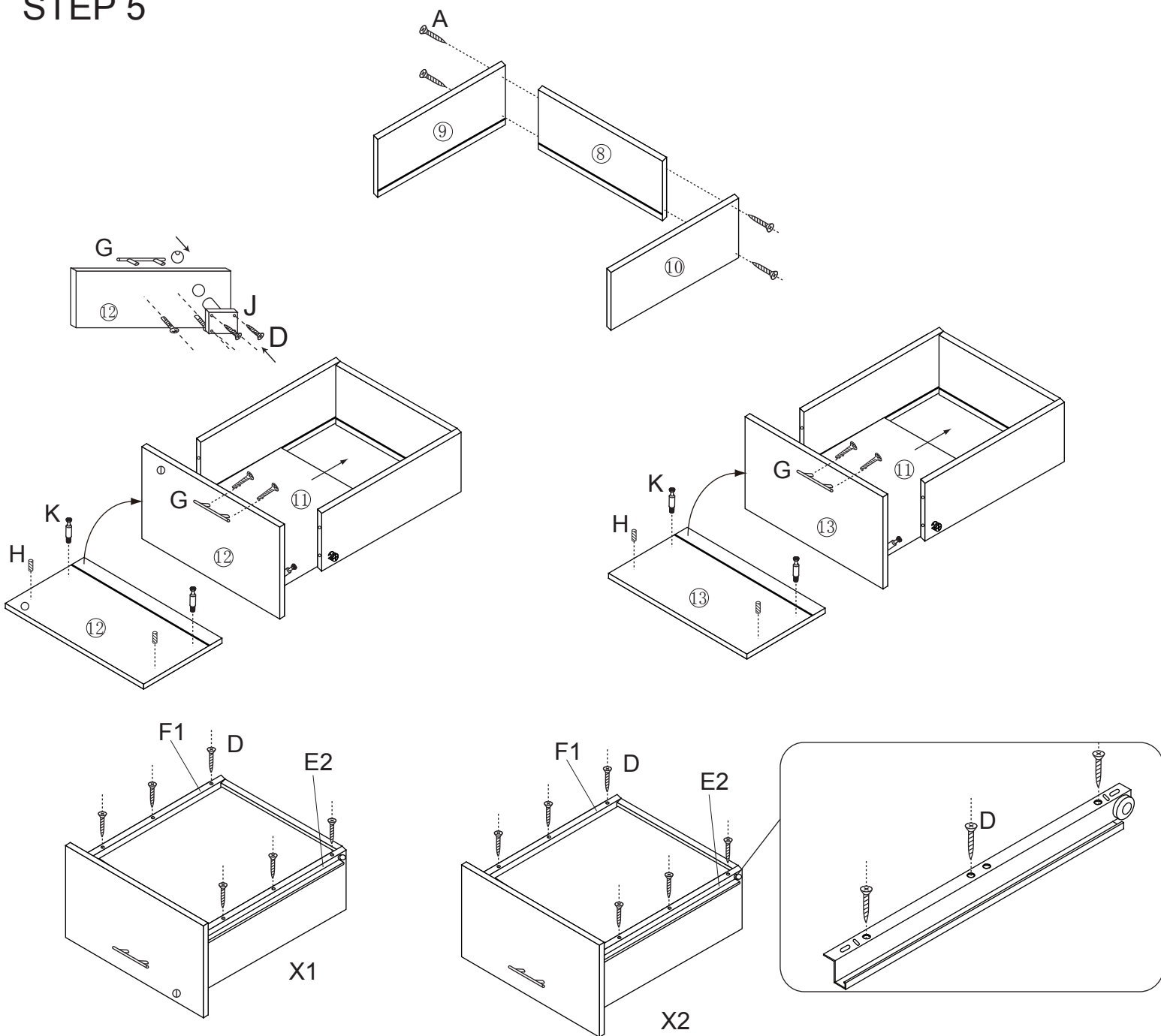
STEP 3



STEP 4



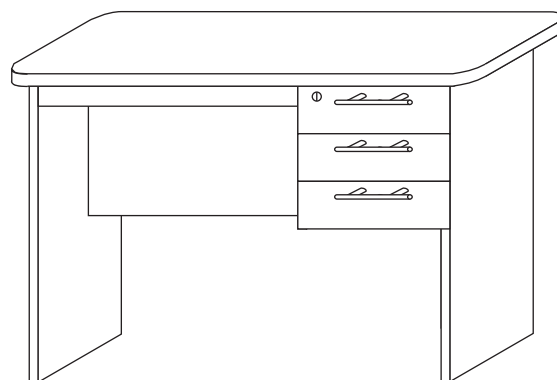
STEP 5



Maximum Load Capacity:

Desk top — **40kg**

Each Drawer — **5kg**



Your Watson Desk is now complete and ready for use